

!

wsl

Windows

[

]

!

linux

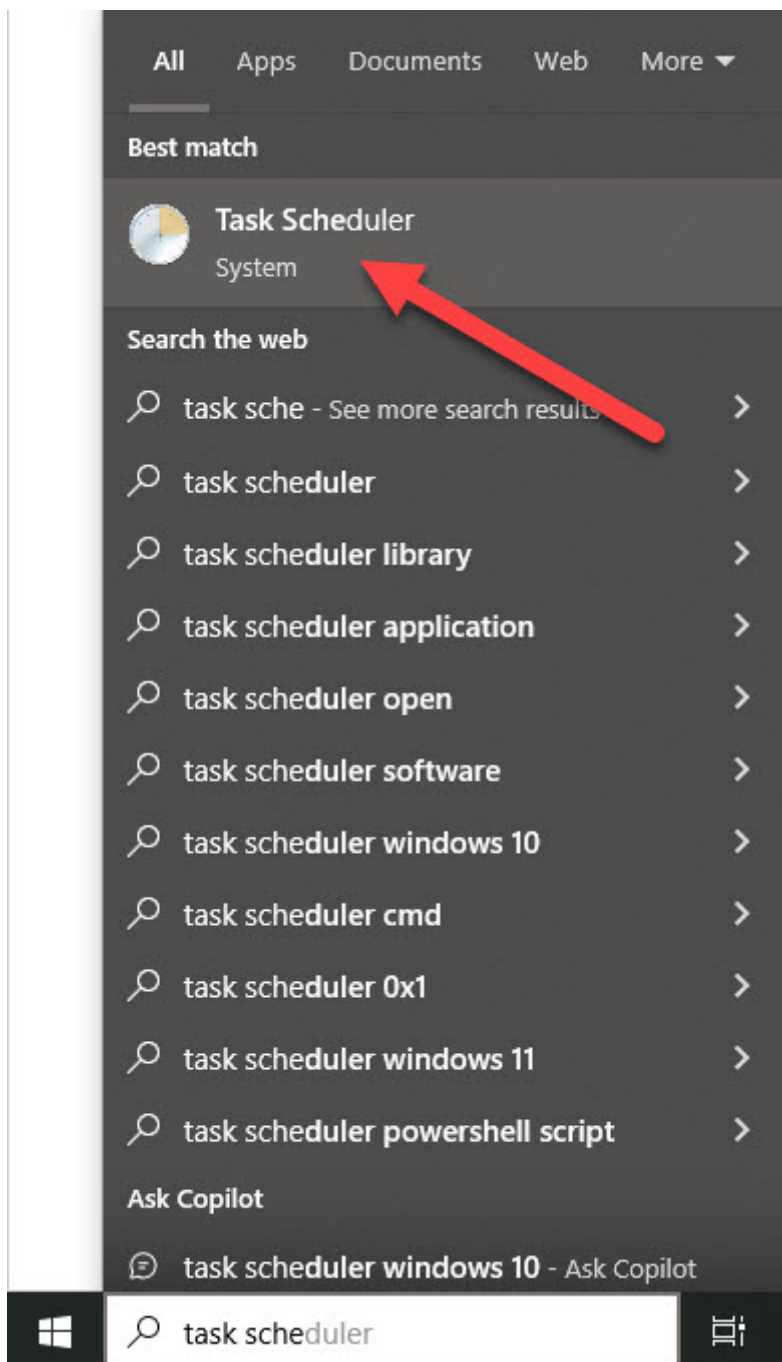
(bandground)

Linux Terminal

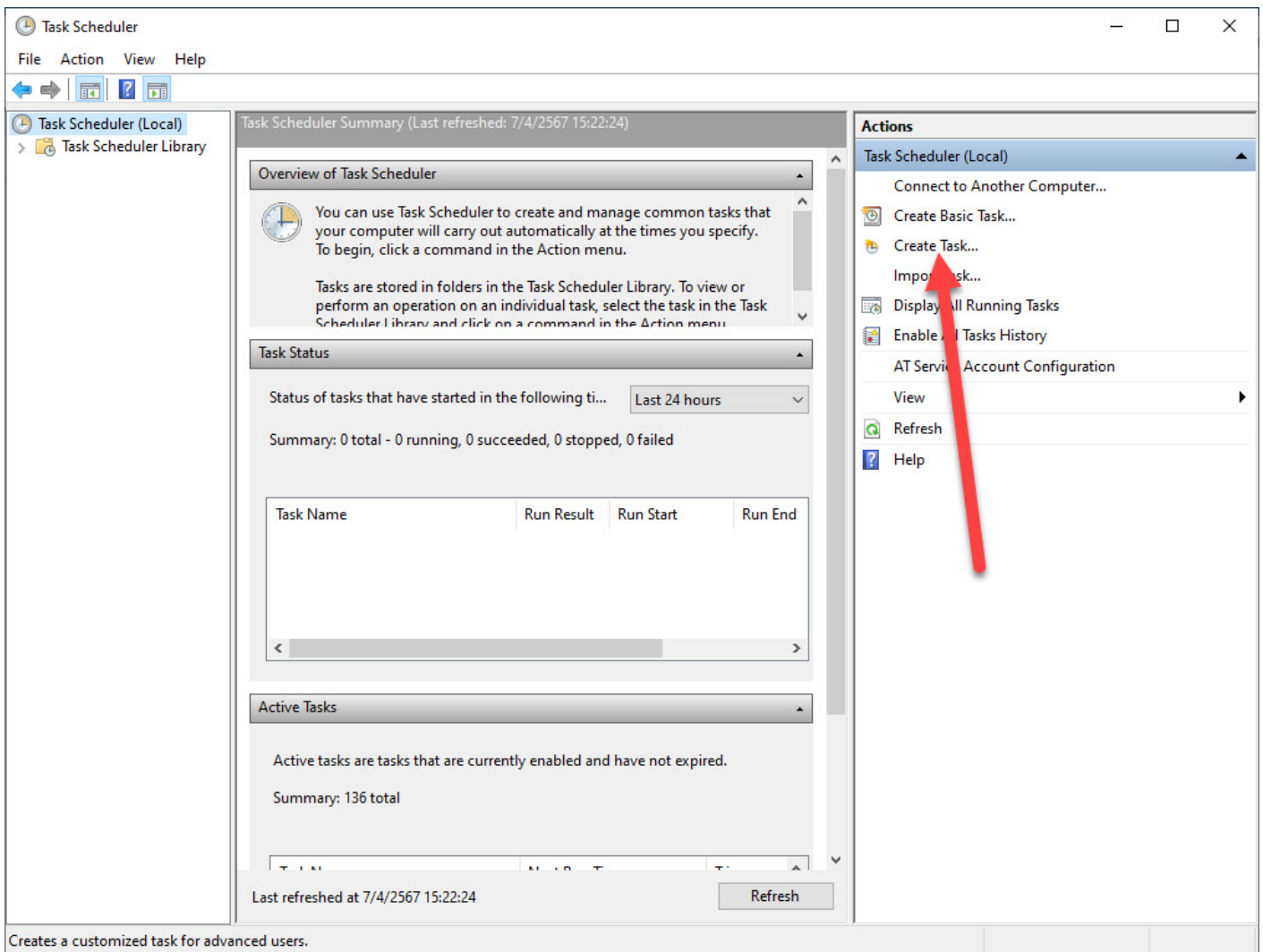
wsl

(auto start)

- systemd (WSL)
- Windows
- Task Schedule
1. Task Schedule



2. Create Task Job



3. General

Create Task

General Triggers Actions Conditions Settings

Name: wsl-auto-run

Location: \

Author: DESKTOP-1AV7VQH\...

Description:

Security options

When running the task, use the following user account:
DESKTOP-1AV7VQH\... Change User or Group...

☐ Run when user is logged on

☒ Run whether user is logged on or not

☒ Do not store password. The task will only have access to local computer resources.

☐ Run with highest privileges

☐ Hidden

Configure for: Windows 10

OK Cancel

4. Triggers New

General Triggers Actions Conditions Settings

When you create a task, you can specify the conditions that will trigger the task.

New Trigger ✕

Begin the task: At startup ▼

Settings

No additional settings required.

Advanced settings

☐ Delay task for: 15 minutes ▼☐ Repeat task every: 1 hour ▼ for a duration of: 1 day ▼☐ Stop all running tasks at end of repetition duration☐ Stop task if it runs longer than: 3 days ▼☐ Activate: 7/ 4/ 2567 ▼ 15:27:30 ▼ ☐ Synchronize across time zones☐ Expire: 7/ 4/ 2568 ▼ 15:27:30 ▼ ☐ Synchronize across time zones☒ Enabled

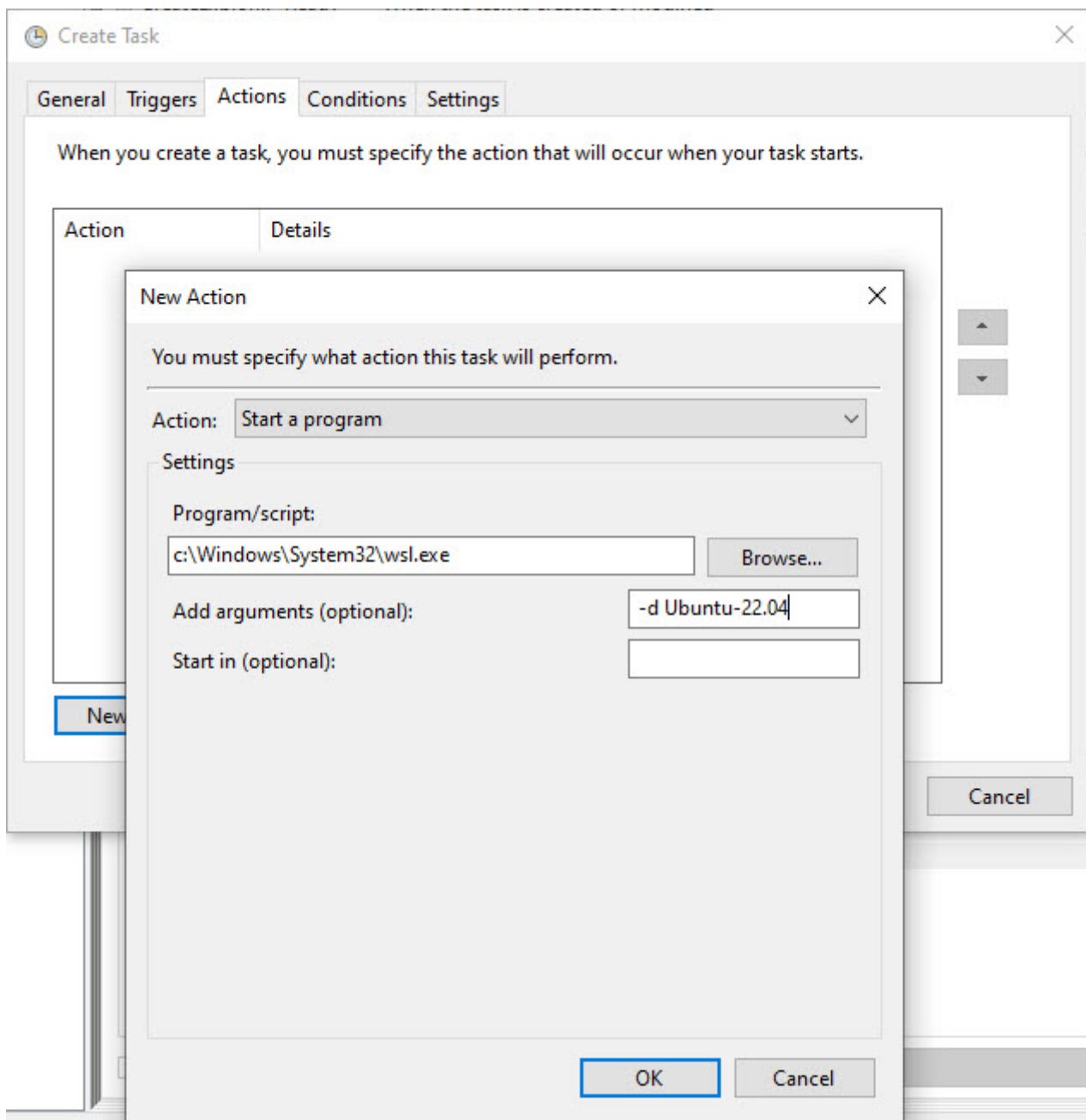
OK

Cancel

5. Action New Linux distro

```
C: \Windows\system32\wsl.exe -d Ubuntu-22.04
```

```
wsl.exe -d Ubuntu-22.04
```



6. Conditions

Create Task

General Triggers Actions Conditions Settings

Specify the conditions that, along with the trigger, determine whether the task should run. The task will not run if any condition specified here is not true.

Idle

☐ Start the task only if the computer is idle for: 10 minutes

Wait for idle for: 1 hour

☒ Stop if the computer ceases to be idle

☐ Restart if the idle state resumes

Power

☐ Start the task only if the computer is on AC power

☒ Stop if the computer switches to battery power

☐ Wake the computer to run this task

Network

☐ Start only if the following network connection is available:

Any connection

OK Cancel

7. Settings

Create Task

General

Triggers

Actions

Conditions

Settings

Specify additional settings that affect the behavior of the task.

☒ Allow task to be run on demand

☒ Run task as soon as possible after a scheduled start is missed

☐ If the task fails, restart every:

1 minute

Attempt to restart up to:

3

times

☐ Stop the task if it runs longer than:

3 days

☒ If the running task does not end when requested, force it to stop

☐ If the task is not scheduled to run again, delete it after:

30 days

If the task is already running, then the following rule applies:

Do not start a new instance

OK

Cancel

OK

8.

restart Windows

Windows

Linux Ubuntu-22.04

Au

```
C:\Users\[redacted]>wsl -l -v
NAME                STATE      VERSION
* Debian            Stopped   2
Ubuntu-20.04        Stopped   2
AlmaLinux9           Stopped   1
Ubuntu-22.04        Running    2
```

application & service

systemd

www.Limitrack.com

Revision #2

Created 7 April 2024 07:34:33 by Admin

Updated 7 April 2024 08:37:06 by Admin